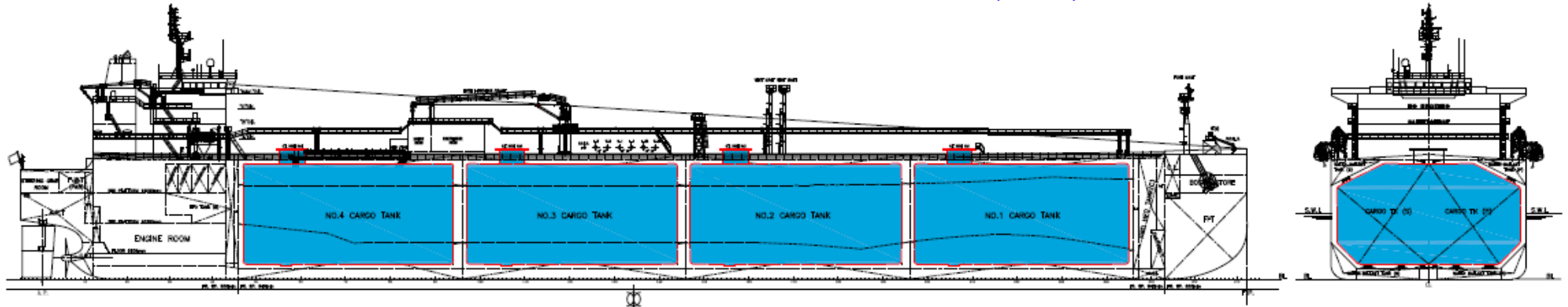


84,000m³ PANDA 84P LPG GAS CARRIER (VLGC)



| | | | | | |
|--|---------------|---|-----------------------|--------------------------------------|--|
| <u>MAIN PARTICULARS</u> | | <u>TANK CAPACITIES</u> | | <u>CARGO SYSTEM</u> | |
| Length, oa | max. 230.00 m | Cargo Tank | 84,000 m ³ | Cargo tank | 4 Prismatic (-52°C, 610kg/m ³ , 0.25 bar g) |
| Length, bp | 226.00 m | Heavy fuel oil | 2,600 m ³ | Tank Insulation | 120mm PUF Spray |
| Breadth, mld | 36.60 m | Diesel oil | 350 m ³ | Cargo Pump | Elec. Motor Driven-Deepwell |
| Depth, mld | 22.20 m | Fresh water | 300 m ³ | | 600 m ³ /h x 120 mlc, S.G 0.61 x 8 sets |
| Design Draft (Td) | 11.40 m | Ballast water | 21,000 m ³ | Booster Pump | Elec. Motor Driven |
| Scantl. Draft (Ts) | 12.00 m | | | | 600 m ³ /h x 115 mlc, S.G 0.61 x 2 sets |
| | | <u>COMPLEMENT</u> | | Cargo Heater/Vaporizer | Shell and Tube x 1 set |
| | | | 28+6 p | Reliquefaction Plant | 3 sets |
| <u>DEADWEIGHT</u> | | <u>MAIN ENGINE</u> | | <u>BALLAST WATER SYSTEM</u> | |
| Deadweight (Td) | abt. 49,200 t | Main Engine | WIN GD 6X62 or | Ballast Water Pump | 800 m ³ /h x 2 sets |
| Deadweight (Ts) | abt. 54,800 t | | MDT 6G60ME-C9.5 | BWTP | 1,600 m ³ /h x 1 set |
| <u>CARGO LIST</u> | | SMCR | 12,535 kW x 90.0 rpm | <u>STEAM GENERATING PLANT</u> | |
| n-Butane, i-Butane, Mixture of n-Butane and i-Butane in any portion, Commercial propane (maximum 8% mole ethane in the liquid phase), Mix of propane and butane, Propane, Propylene | | CSO | 10,655 kW x 85.3 rpm | Aux. Boiler | 2,500 kg/h x 1 set |
| | | <u>SERVICE SPEED</u> | | Exhaust Gas Economizer | 1,500 kg/h x 1 set |
| | | Service Speed (CSO, Td, ESD) | abt. 16.8 kn | Subject to final ME selection | |
| | | Sea Margin | 15 % | <u>POWER SUPPLY</u> | |
| <u>CLASSIFICATIONS</u> | LR | <u>FUEL OIL CONSUMPTION OF M/E</u> | | <u>NAVIGATION EQUIPMENT</u> | |
| ✕ 100 A1 Liquefied Gas Carrier, Ship Type 2G, Propane, Butane, Propane-Butane mixtures etc. in independent tanks Type A, max sg 0.61, maximum vapour pressure 0.25 bar, min cargo temperature -52°C, ShipRight (SDA, FDA, CM, ACS (B)), *IWS, LI, ECO (BWT, IHM) | | D.F.O.C. at CSO | 40.4 t/d | Radars (ARPA) | DGPS Navigators |
| ✕ LMC, UMS, NAV1, ✕ Lloyd's RMC (LG) | | <u>CRUISING RANGE</u> | | Gyro compass/Auto pilot | ECDIS (1 set) |
| With the descriptive notes "ShipRight (BWMP(T), SCM, SERS)" | | 22,000 nm | | Speed log (single axis) | BNWAS |
| or BV equivalent | | <u>REGULATION</u> | | Echo Sounder | |
| | | a) NOx Tier III: | SCR | | |
| | | b) New IGC Code: | Revised MSC.93 | | |